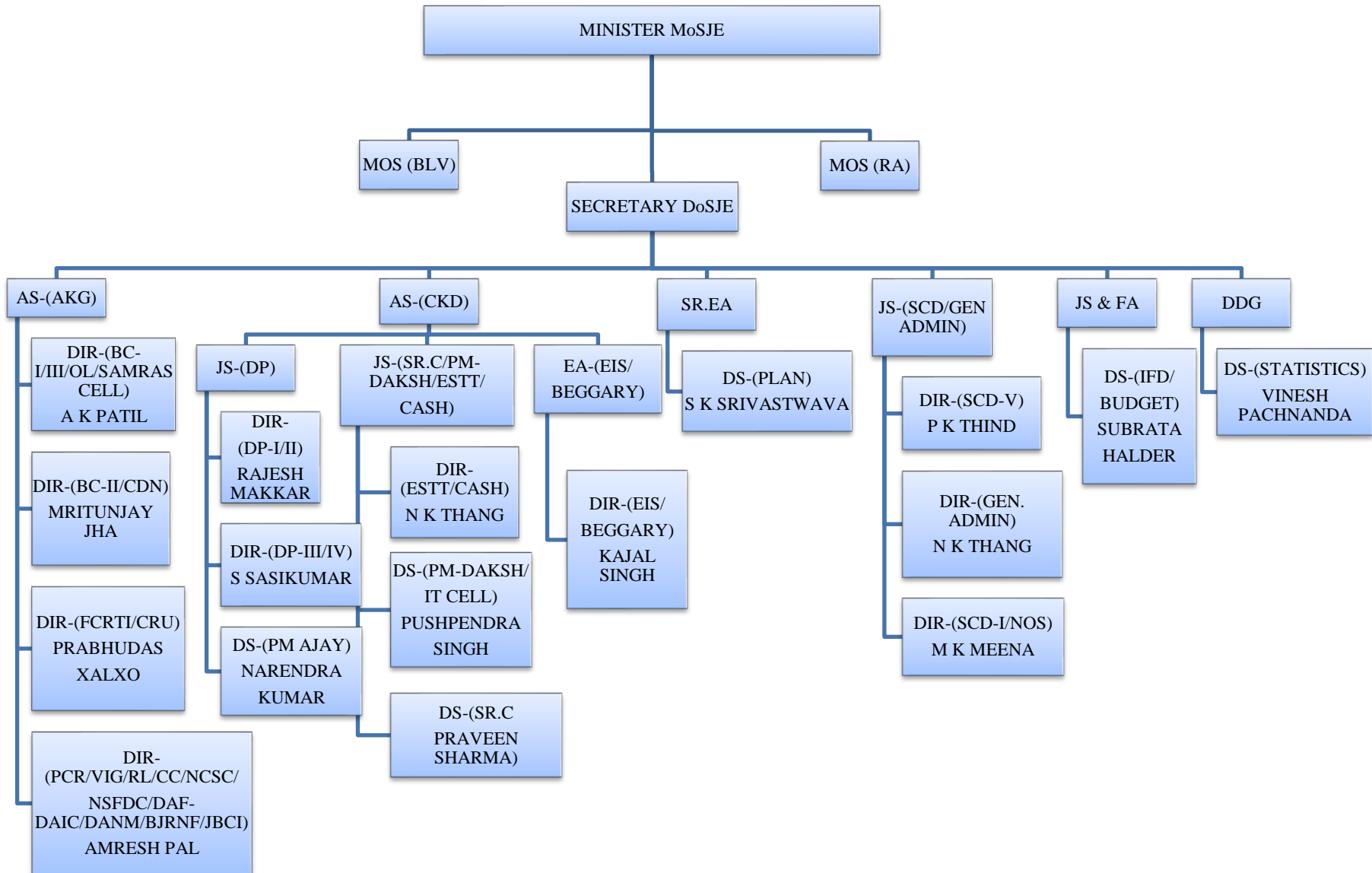


ORGANOGRAM OF DEPARTMENT OF SOCIAL JUSTICE AND EMPOWERMENT UPTO DS-DIRECTOR LEVEL



Abbreviations used in the Organizational Chart :-

Sl. No.	Abbreviation	Expanded Form
1	MoSJE	Ministry of Social Justice & Empowerment
2	MoS	Minister of State
3	SJ&E	Social Justice and Empowerment
4	JS	Joint Secretary
5	JS & FA	Joint Secretary & Financial Advisor
6	Jt. Dir.	Joint Director
7	SD	Social Defence
8	RR	Rescue & Rehabilitation of Narmada Project
9	Admn.	Administration
10	Parl./CC/RL	Parliament/Corporate Cell/Revision of List
11	Cdn.	Coordination
12	OL	Official Language
13	CR	Central Registry
14	FC	Facilitation Centre
15	RTI	Right to Information
16	CVO	Chief Vigilance Officer
17	St. Div.	Statistics Division
18	Pl. Div.	Plan Division
19	Dir.	Director
20	DS	Deputy Secretary
21	DP	Drug Abuse Prevention
22	NISD	National Institute of Social Defence
23	SCB	Senior Citizen Branch
24	DD	Deputy Director
25	IFD	Integrated Finance Division
26	SCD	Scheduled Castes Development
27	BC & EIS	Backward Class & Economic Inclusion Section
28	DAF-DAIC/BJRNF & JBCI	Dr. Ambedkar Foundation-Dr. Ambedkar International Centre/Babu Jagjivan Ram National Foundation & Justice Balakrishnan Commission of Inquiry